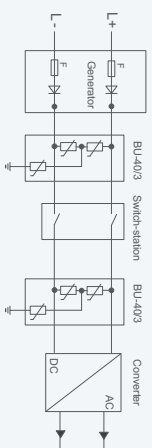
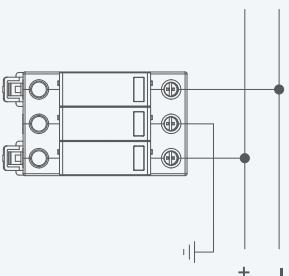


BUD-40/3 PV/DC Surge Protection Device

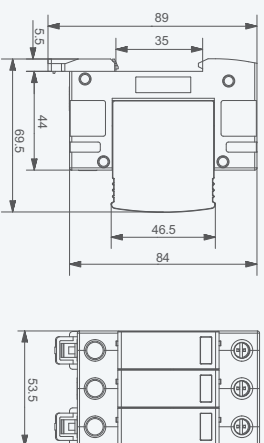
Principal Drawing



Wiring Method



Dimensions(mm)



BR-30 PV DC Fuse Holder

Welcome to our website for more information:
www.zibeny.com



BR-30 PV DC Fuse Holder



- 1 Brand
- 2 Type
- 3 Rated Current
- 4 Rated Voltage
- 5 Fuse Size
- 6 Electrical Diagram
- 7 Status Indicator

- Photovoltaic Applications
- Max Breaking Capacity up to 20KA Effective Protection
- The Innovation Replacing Fuse Link Touch-safe
- Led Indicator, Reminding Fuse Link Replacement
- Be Suit for 10x38mm Fuse Size
- Comply with :IEC6094-3



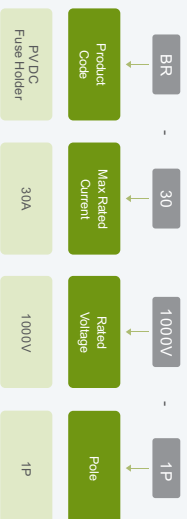
Application

ZIBENY PV DC BR-30 Fuse Holder was designed and manufactured, complying with the standard IEC60947-3. The Rated Current up to 30A-rated voltage up to 1000V DC. It applied for PV DC combiner box, inverter etc, with the main function of over-current protection and effective disconnection.

Appearance Introduction



Type Instruction

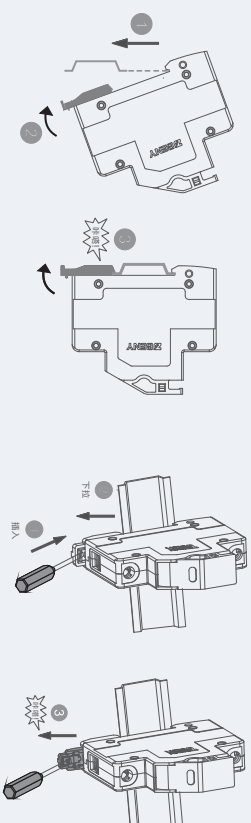


Parameter

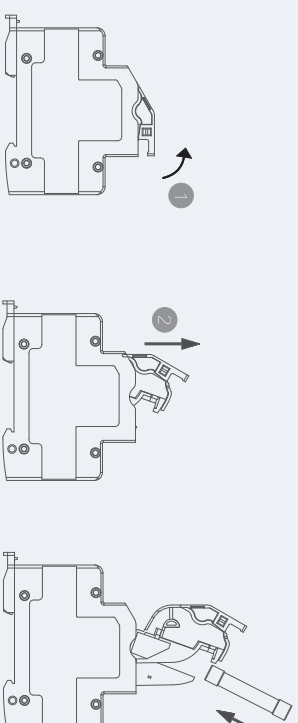
PV/DC BR-30 Fuse Holder	1P
Pole	1P
According to	IEC 60947-3
Electrical Characteristics	
Rated Working Voltage	Ue 1000V DC
Rated Current	In 30A
Breaking Capacity	20KA
Max Power Dissipation	3W
Control and Indication	
Operating State/Fault Indication	Indicator Light OFF/Indicator Light ON
Connection and Installation	
Wire	2.5mm ² ~25mm ²
Terminal Screws	M5
Torque	2.5 Nm
Degrees of Protection	IP 20
Installation Environment	
Fuse Size	10x38 mm
Operating Temperature Range	-30°C~+70°C
For Mounting On	TH35-7.5/DIN35
Pollution Degree	3
Relative Humidity	+20°C≤95%,+40°C≤50%
Weight	0.07Kg Per pole
Installation Class	III

BR-30 PV DC Fuse Holder

Installation



Replacement Fuse



Dimensions(mm)

